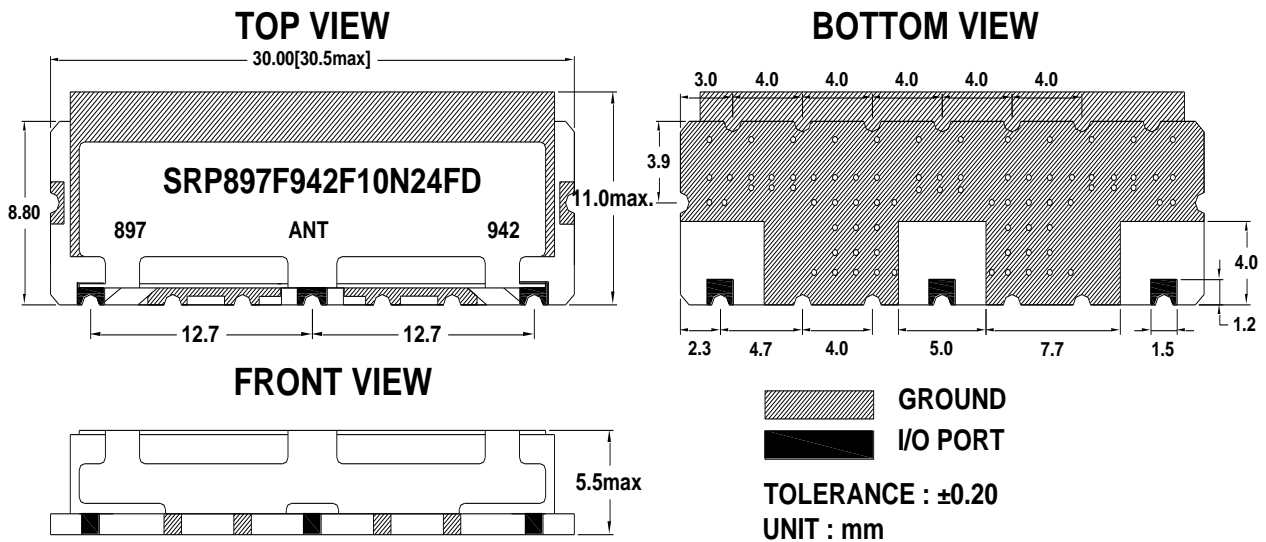


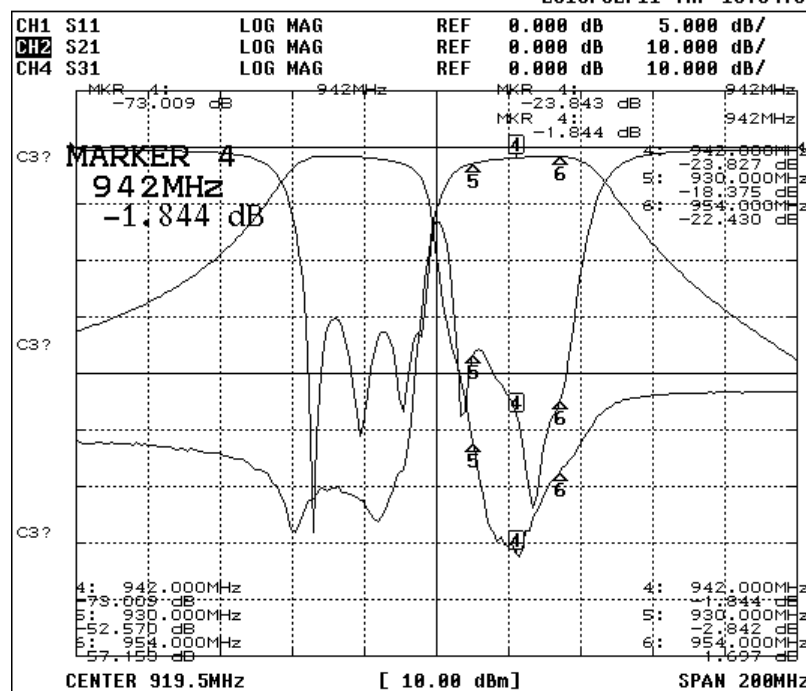
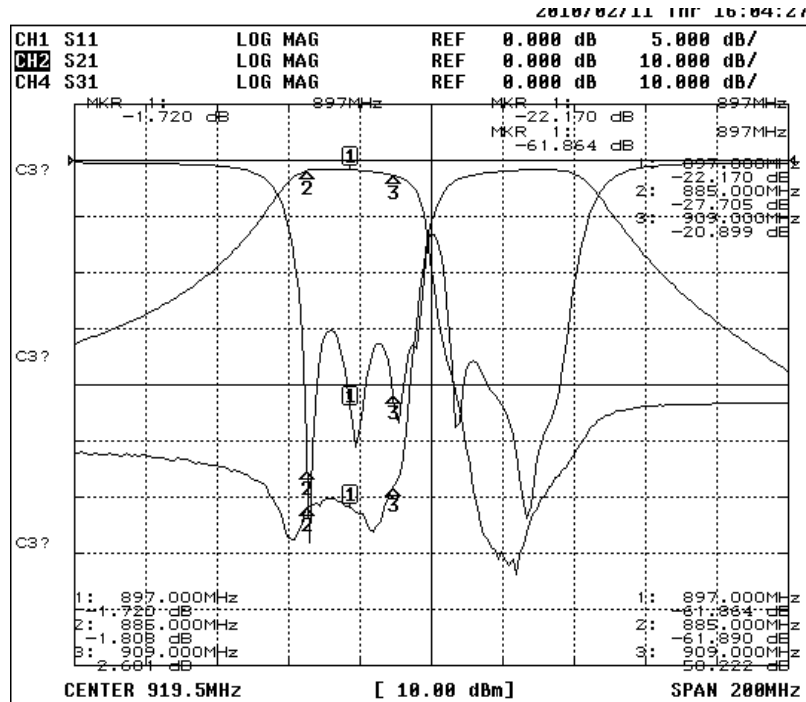
Electrical Specification

ITEMS	ANT >> Low	ANT >> High	Unit
Center Frequency [fo]	897.0	942.0	MHz
Bandwidth [BW]	fo± 12.0 [885.0 ~ 909.0]	fo± 12.0 [930.0 ~ 954.0]	MHz
Insertion Loss in BW	3.0	3.5	dB max.
Ripple in BW	1.7	1.7	dB max.
Return Loss in BW <input checked="" type="checkbox"/> ANT Port	13.0	13.0	dB min.
V S W R in BW <input type="checkbox"/> ALL Port			max.
Attenuation	45.0 dB min @ [930.0 ~ 954.0]	45.0 dB min @ [885.0 ~ 909.0]	MHz
<input checked="" type="checkbox"/> Absolute Value	dB min @ [~]	dB min @ [~]	MHz
<input type="checkbox"/> Relative Value	dB min @ [~]	dB min @ [~]	MHz
	dB min @ [~]	dB min @ [~]	MHz
Isolations	dB min @ [~]		MHz
	dB min @ [~]		MHz
Input Power	3.0 W max.		
In/Out Impedance	50 Ω		
Operation Temp. Range	-40°C to +85°C		

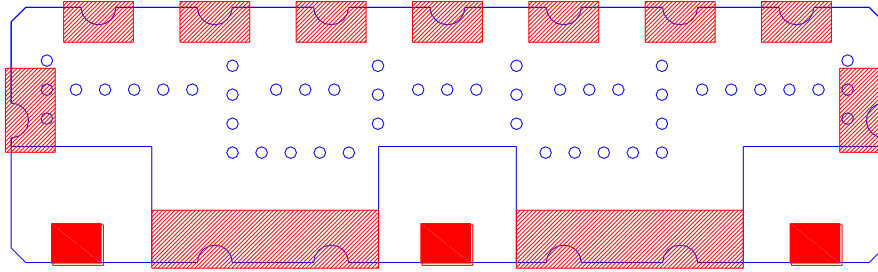
Mechanical Specification





Plot Data



Recommended PC Board Pattern



 GROUND SOLDEIRNG POINT
 I/O PORT SOLDEIRNG POINT