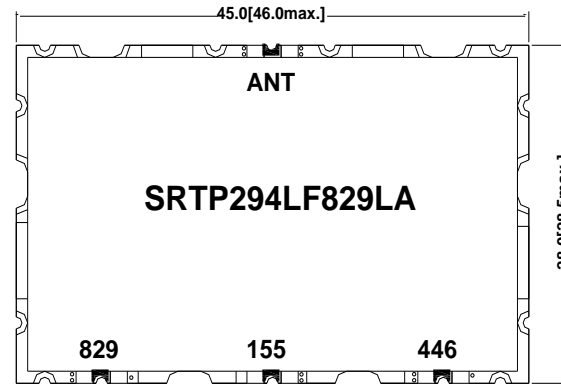


Electrical Specification

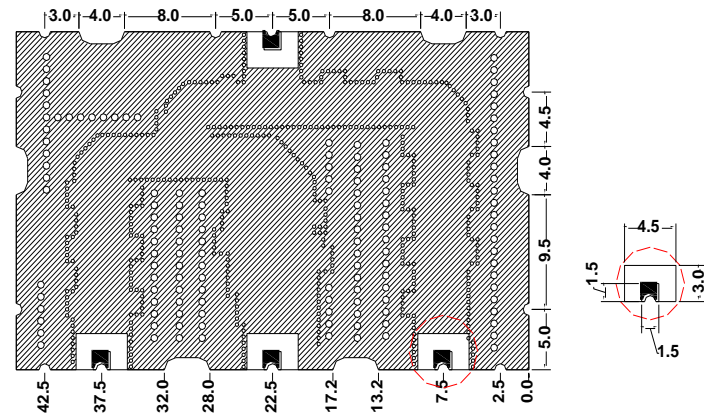
Items	CH 1	CH 2	CH 3	Unit
Center Frequency [fo]	155.0	446.0	829.0	MHz
Bandwidth [BW]	fo± 24.0 [131.0 ~ 179.0]	fo± 71.0 [375.0 ~ 517.0]	fo± 136.0 [693.0 ~ 965.0]	MHz
Insertion Loss in BW	3.0	3.0	3.0	dB max.
Ripple in BW	0.5	0.5	0.5	dB max.
Return Loss in BW	16.0	16.0	16.0	dB min.
V S W R in BW				max.
Attenuation	30 dB min. @ [375.0 ~ 517.0]	30 dB min. @ [131.0 ~ 179.0]	30 dB min. @ [131.0 ~ 179.0]	MHz
<input checked="" type="checkbox"/> Absolute Value	30 dB min. @ [693.0 ~ 965.0]	30 dB min. @ [693.0 ~ 965.0]	30 dB min. @ [375.0 ~ 517.0]	MHz
<input type="checkbox"/> Relative Value	18 dB min. @ [96.0 ~]	dB min. @ [~]	dB min. @ [~]	MHz
	dB min. @ [~]	dB min. @ [~]	dB min. @ [~]	MHz
	dB min. @ [~]	dB min. @ [~]	dB min. @ [~]	MHz
	dB min. @ [~]	dB min. @ [~]	dB min. @ [~]	MHz
	dB min. @ [~]	dB min. @ [~]	dB min. @ [~]	MHz
Coupler			-	
Input Power	3.0 W max.			
In/Out Impedance	50 Ω			
Operation Temp. Range	-40°C to +85°C			

Mechanical Specification

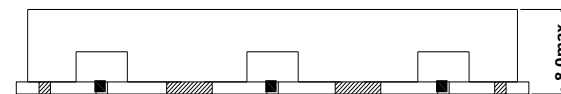
TOP VIEW



BOTTOM VIEW



FRONT VIEW





I/O PORT

GROUND

TOLERANCE :±0.20

UNIT : mm

Plot Data

